

**Snorkel** 

**UNO**<sup>®</sup>

**33 & 41**  
Electric Powered

Reach hard to access areas with these unique articulating, telescoping booms for slab applications



**S P E C I F I C A T I O N S**

	<b>UNO 33 E</b>	<b>UNO 41 E</b>
<b>Working Height Platform Height</b>	38' 8" (11.8 m)	46' 10" (14.3 m)
<b>Capacity</b>	500 lbs. (227 kg)	
<b>Size</b>	48" x 30" (122 x 76 cm)	
<b>Construction</b>	High strength aluminum alloy	
<b>Boom Construction</b>	Steel	
<b>Articulating Booms</b>	High strength aluminum alloy	
<b>Telescoping Boom</b>	Double acting hydraulic cylinder	
<b>Boom Extension</b>	Lubrication free, ultra high molecular weight polyethylene	
<b>Boom Guides</b>	Lubrication free, composite material	
<b>Pivot Pin Bearings</b>	21' 4" (6.5 m)	23' 7.5" (7.2 m)
<b>Horizontal Reach</b>	at 15' 4" (4.7m)	at 16' 2" (4.9m)
<b>Hose &amp; Wiring Extension</b>	Telescoping housing attached to sides of booms	
<b>Turntable Rotation</b>	360° non-continuous	
<b>Power Source</b>	48 volt DC electric	
<b>Hydraulic System Capacity</b>	5 U.S. gal. (18.9 L)	
<b>Maximum Drive Speeds</b>		
<b>Booms Stowed</b>	3.5 mph (5.6 kph)	3.0 mph (4.9 kph)
<b>Booms Elevated</b>	1.0 mph (1.6 kph)	
<b>Gradeability</b>	25%	20%
<b>Turning Radius (Inside)</b>	6' 6" (2. m)	
<b>Stowed Height</b>	6' 7" (2. m)	
<b>Width</b>	5' 11.5" (1.8 m)	
<b>Stowed Length</b>	15' 10" (4.8 m)	
<b>Wheelbase</b>	6' (1.8 m)	
<b>Tires</b>	9.5 x 16.5, 8 ply rating	
<b>Type</b>	Pneumatic	Foam filled
<b>Weight (approx.)</b>	8,500 lbs (3,856 kg)	13,000 lbs (5,897 kg)

- Fully proportional controls for drive
- Rheostat control of boom movement
- Zero tailswing with booms elevated
- 3-way braking action
- On-board battery charger
- Removable battery trays with forklift pockets
- Foam filled tires (UNO 41 only)
- 150° manual platform rotation
- Driveable at full height
- 5° tilt alarm
- 125 volt GFCI AC outlet at platform
- Aluminum telescoping boom
- Hour meter
- Hydraulic oil level and temperature gauges
- Forklift pockets and lifting lugs
- D-ring lanyard attachment
- 60 month warranty

**Snorkel** 

**UNO**<sup>®</sup>

**33 & 41**

Electric Powered

Articulating,  
Telescoping Boom

**Optional Equipment**

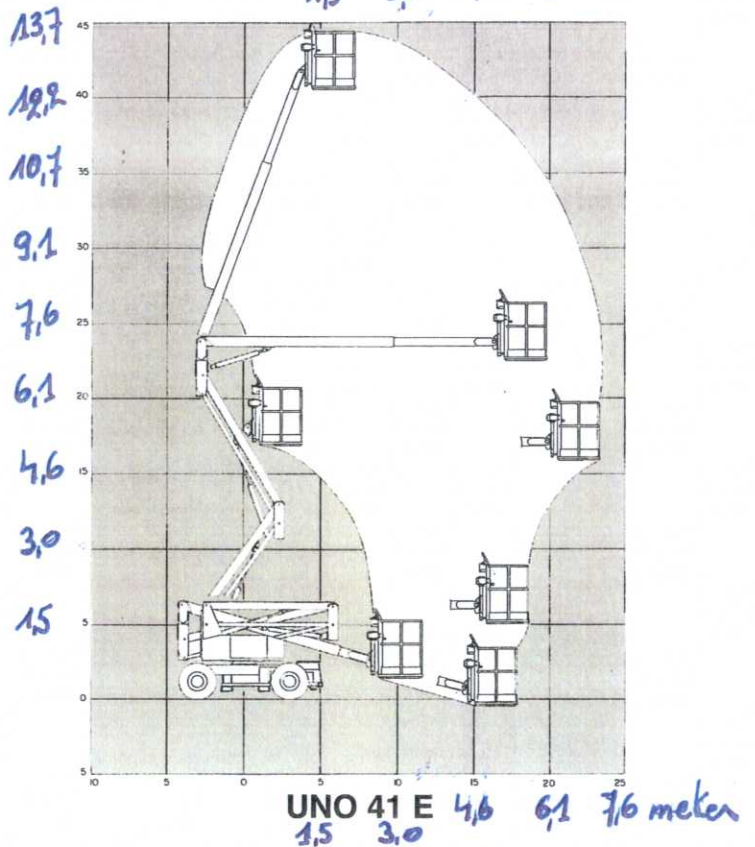
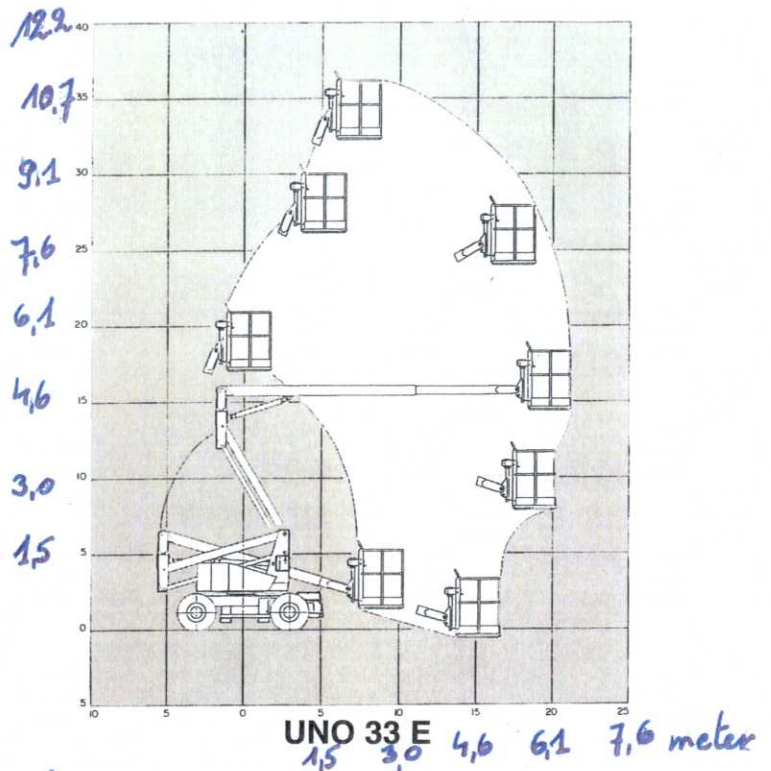
- Operator horn
- Tool Tray
- Keyed selector switch
- Airline to platform
- Flashing light on boom
- Swinging gate
- Battery condition indicator
- Extra, complete battery pack
- Drive motion alarm
- Foam filled tires (UNO 33 only)
- Non-marking tires (UNO 33 only)
- EE rating
- Platform option  
60" x 30" (152 x 76 cm) Alum.  
(Capacity 500 lbs., 227 kg)

**DANGER:** Models described in this brochure are NON-INSULATED and do not provide electrocution protection from contact with or close proximity to energized conductors which is pointed out on decals and placards attached to the machine.

Only qualified and trained operators are to be authorized to use and operate a work platform.

Aerial work platforms must be elevated only on firm, level surface.

Products in this brochure comply with applicable ANSI Standards. This literature is for illustrative purposes only. Consult Operating/Maintenance and Parts Manuals for proper procedures. Specifications may vary and are subject to change without notice or obligation.



**Snorkel**   
An OmniQuip Company



P.O. Box 1160  
St. Joseph, MO 64502-1160  
Phone: (816) 364-0317  
Fax: (816) 364-0380  
www.snorkelusa.com