

Aichi SR-123

The SR-123 features a crawler superior in travelling on uneven ground. It can be used for various aerial works including steelworks erection at a construction site, painting, electrical work, installation of lighting fixture, piping work, duct, and air-conditioning work. In addition to the safety, high mobility and operation enhance the working efficiency at the site.



Model Number And Model Name

Model Number	SR-123
Model Name	Crawler type self propelled aerial platform

Platform

Max. Load	250kgf
Max. Platform Height	12.0m
Max. Horizontal Outreach	10.6m
Platform Inner Size Standard (D x W x H)	1.83m x 0.75m x 1.1m
Platform Inner Size Option (D x W x H)	1.3m x 0.75m x 1.1m
Platform Rotator	180° hydraulic

Boom

Length	5.0m - 10.9m
--------	--------------

Slewing Device

Slewing Angle	360° continuous
Slewing Speed	0.54 r.p.m.

Travelling

Travelling Speed	0 - 1.5hm/h
Gradability Stowed	24° (45%)

Vehicle Dimensions (refer diagram below)

A: Length	6,330mm
B: Width	2,150mm
C: Height	2,200mm
Gross Vehicle Weight	7,650kgf
J: Ground Clearance	360mm
E: Tumbler Center Distance	2,050mm
F: Crawler Center Distance	1,700mm
G: Crawler Shoe Width	450mm
Max. Ground Pressure	0.66kgf/cm ² (9psi)

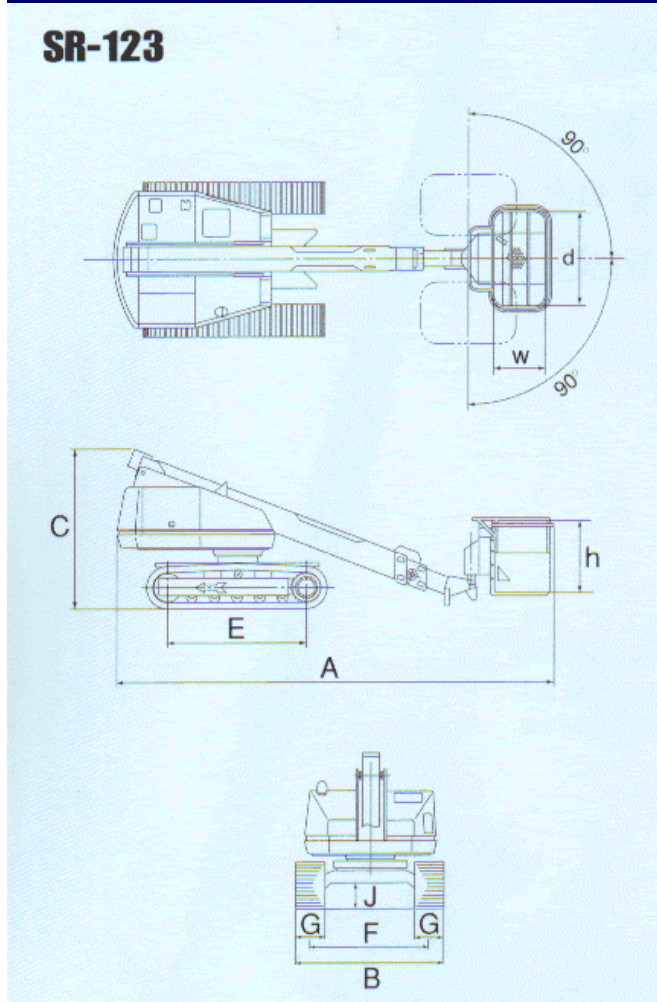
Power Source

Name And Type	ISUZU 4JB1
Max. Output	55PS (41kw) / 2,200 r.p.m.
Displacement	2,771cc
Voltage	24V DC
Fuel Tank Capacity	108L (28.5 gal)

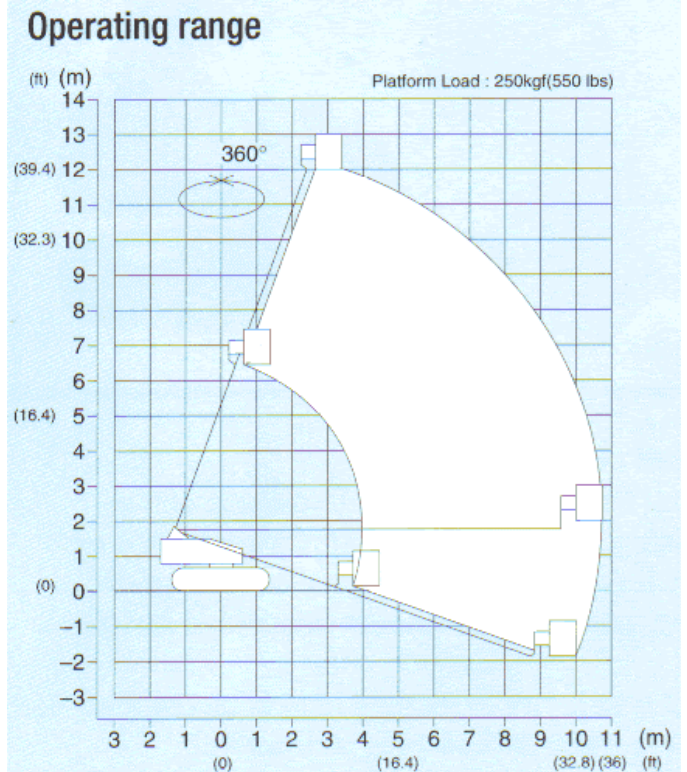
Hydraulics

Pressure	210kgf/cm ² (2,980psi)
Reservoir Capacity	170L

SR-123 Overall Dimensions



SR-123 Working Range Chart



Notes:

1. The deflection of the boom is not taken into consideration in the chart.
2. The operating range is the same in any direction.
3. The chart shown above is based on supposition that the ground is horizontal and hard and that the wind velocity is less than 16 m/sec.